

# SPARKS

## Percentage & Number of Pedestrian Crashes - Time of Day & Season



WINTER (Jan-Feb, Dec)



SPRING (Mar-May)



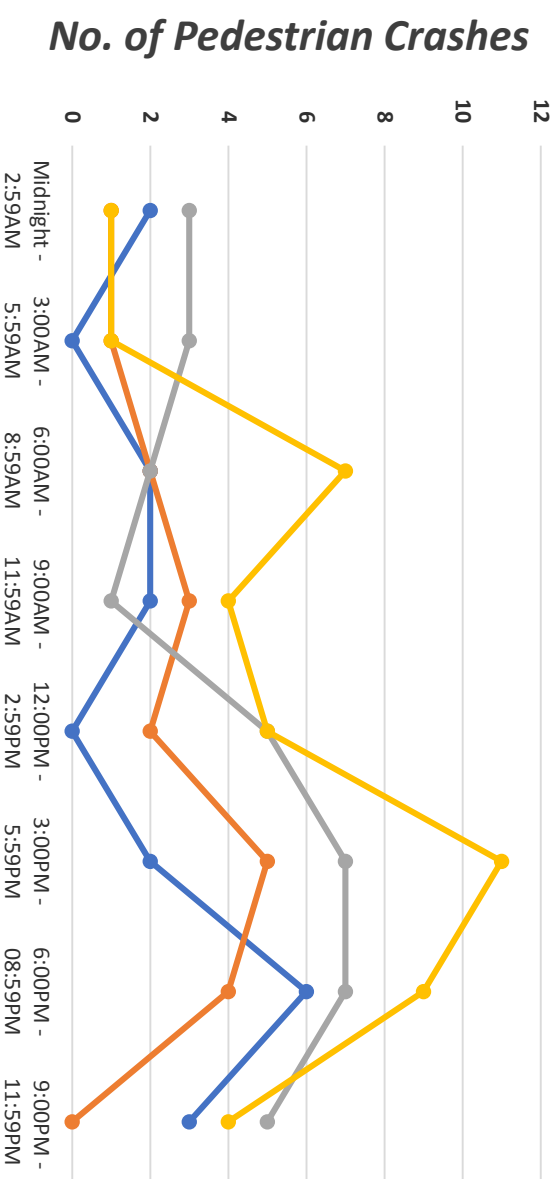
SUMMER (Jun-Aug)



FALL (Sep-Nov)

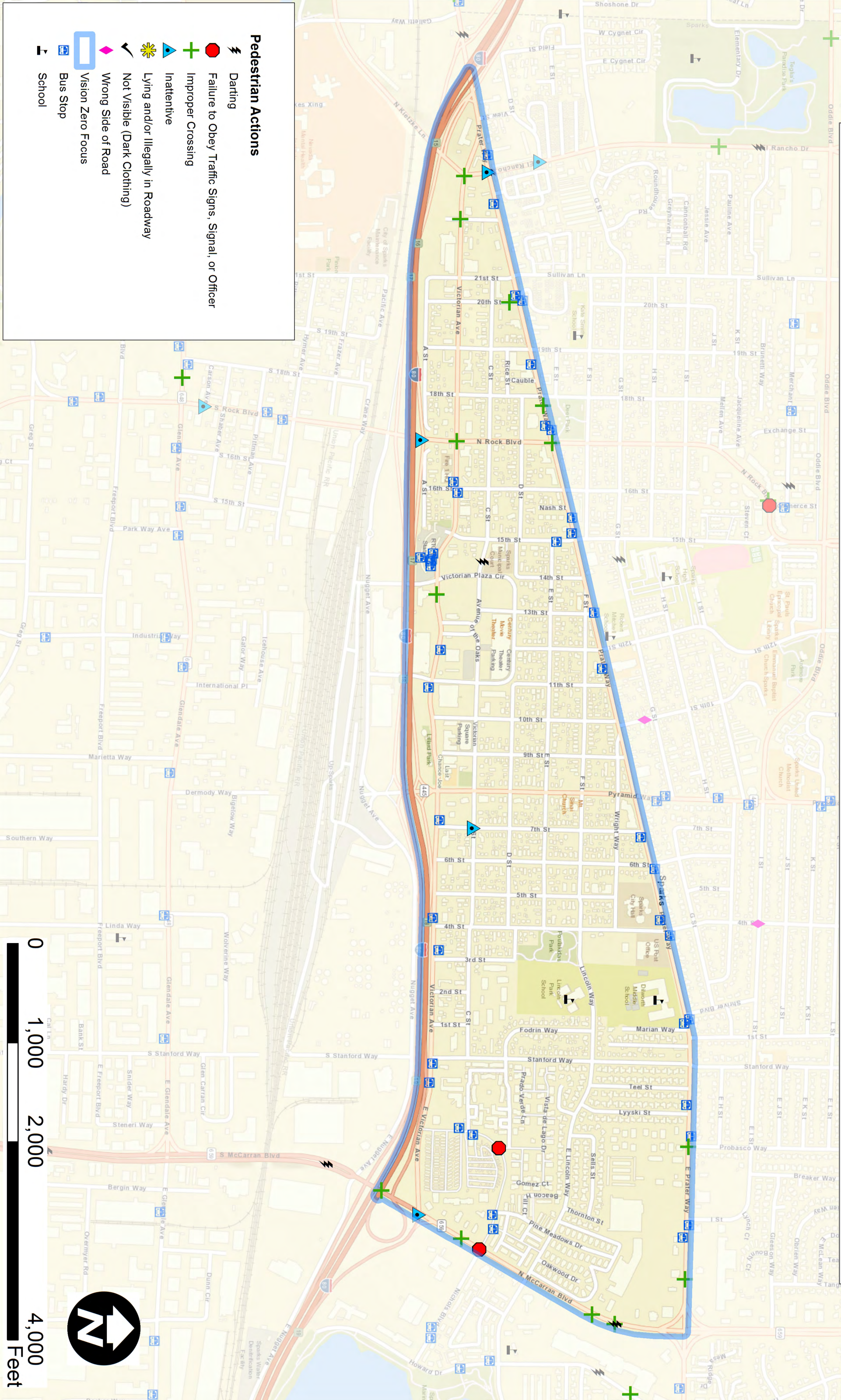


- Midnight - 2:59AM
- 3:00AM - 5:59AM
- 6:00AM - 8:59AM
- 9:00AM - 11:59AM
- 12:00PM - 2:59PM
- 3:00PM - 5:59PM
- 6:00PM - 8:59PM
- 9:00PM - 11:59PM













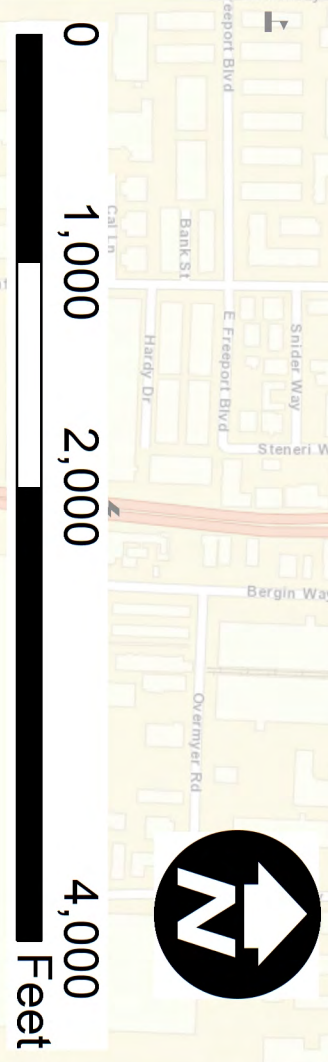
- WINTER
- SPRING
- SUMMER
- FALL

# 2011 - 2017 Sparks Pedestrian Actions in Pedestrian Crashes

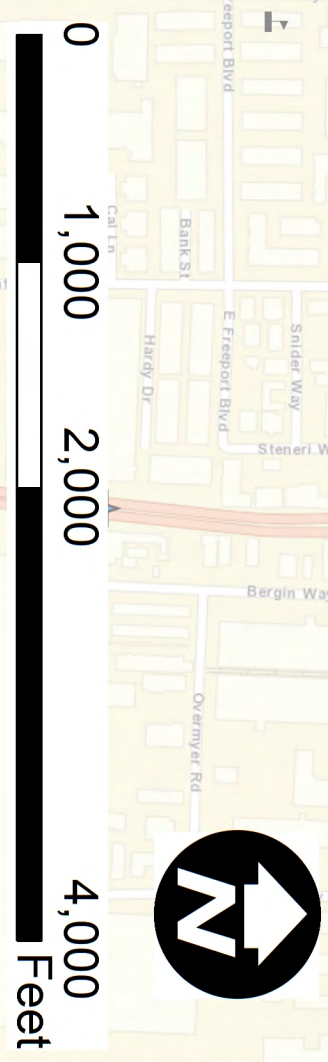
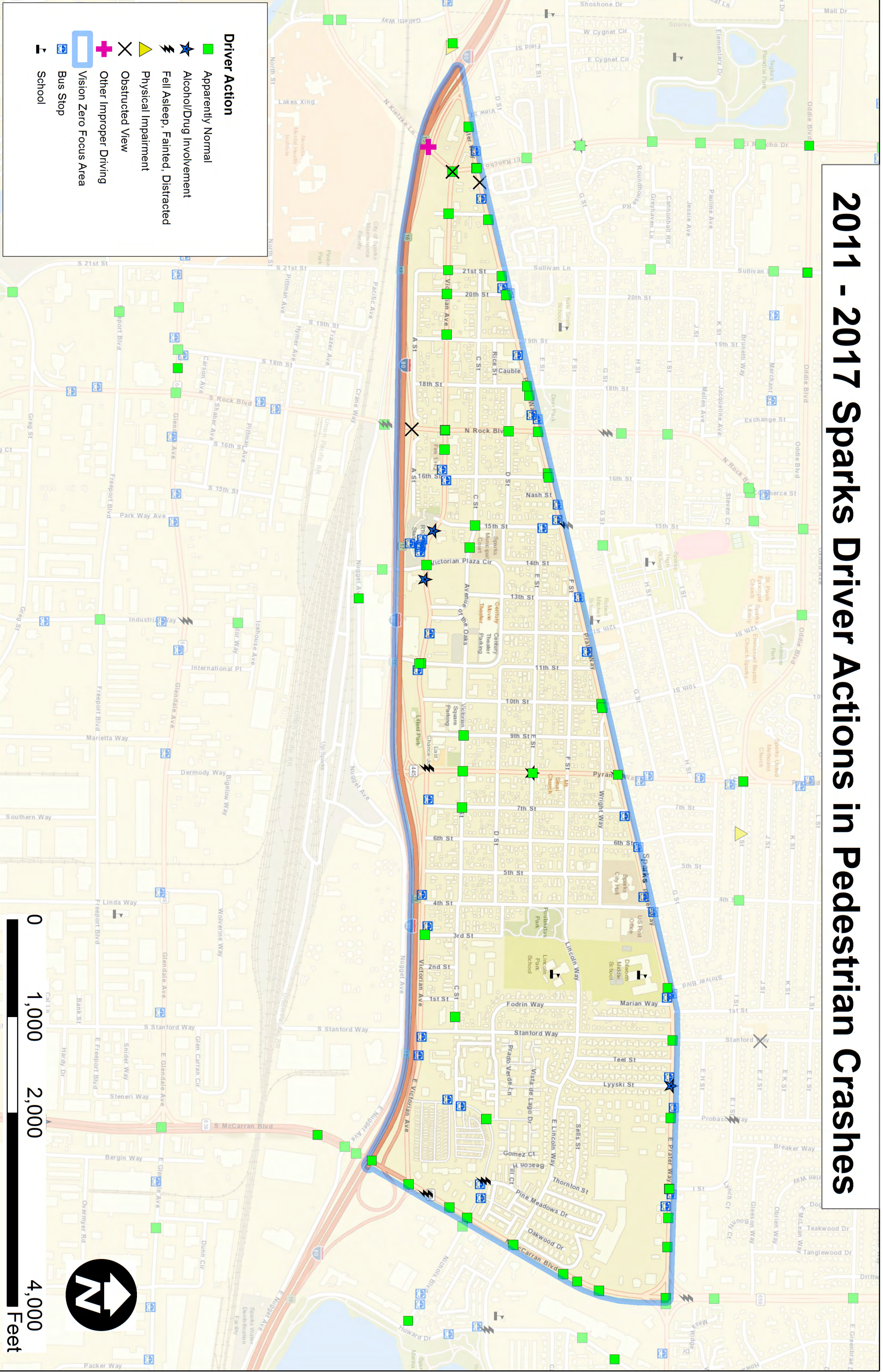


## Pedestrian Actions

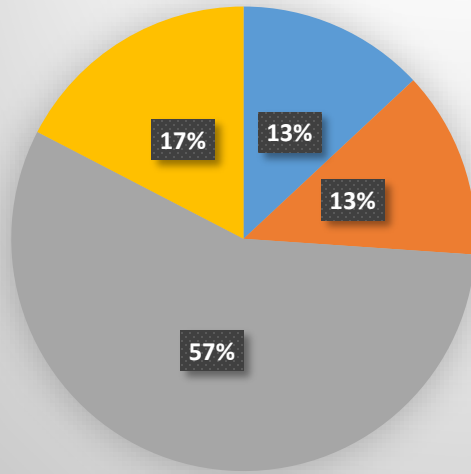
-  **Failure to Obey Traffic Signs, Signal, or Officer**
-  **Improper Crossing**
-  **Inattentive**
-  **Lying and/or Illegally in Roadway**
-  **Not Visible (Dark Clothing)**
-  **Wrong Side of Road**
-  **Vision Zero Focus**
-  **Bus Stop**
-  **School**
-  **Darting**



# 2011 - 2017 Sparks Driver Actions in Pedestrian Crashes



## 2011 - 2017 Sparks Area Crashes with Known Pedestrian Actions

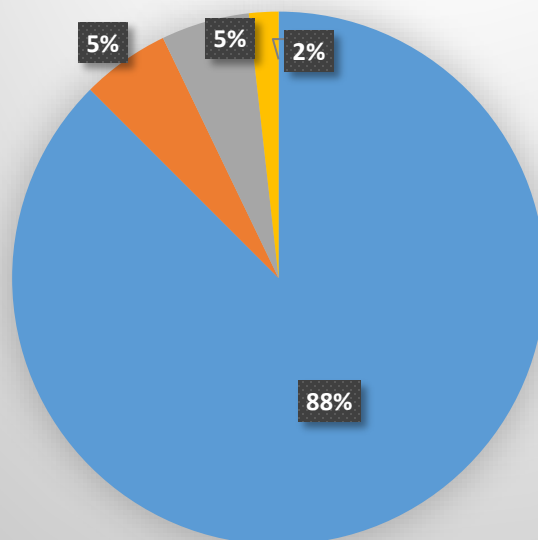


Total Crashes: 23\*

- Darting
- Failure to Obey Traffic Signs, Signals or Officer
- Improper Crossing
- Inattentive

*\*Does not include 52 crashes with no known Pedestrian action*

## 2011 - 2017 Sparks Area Crashes with Known Driver Actions

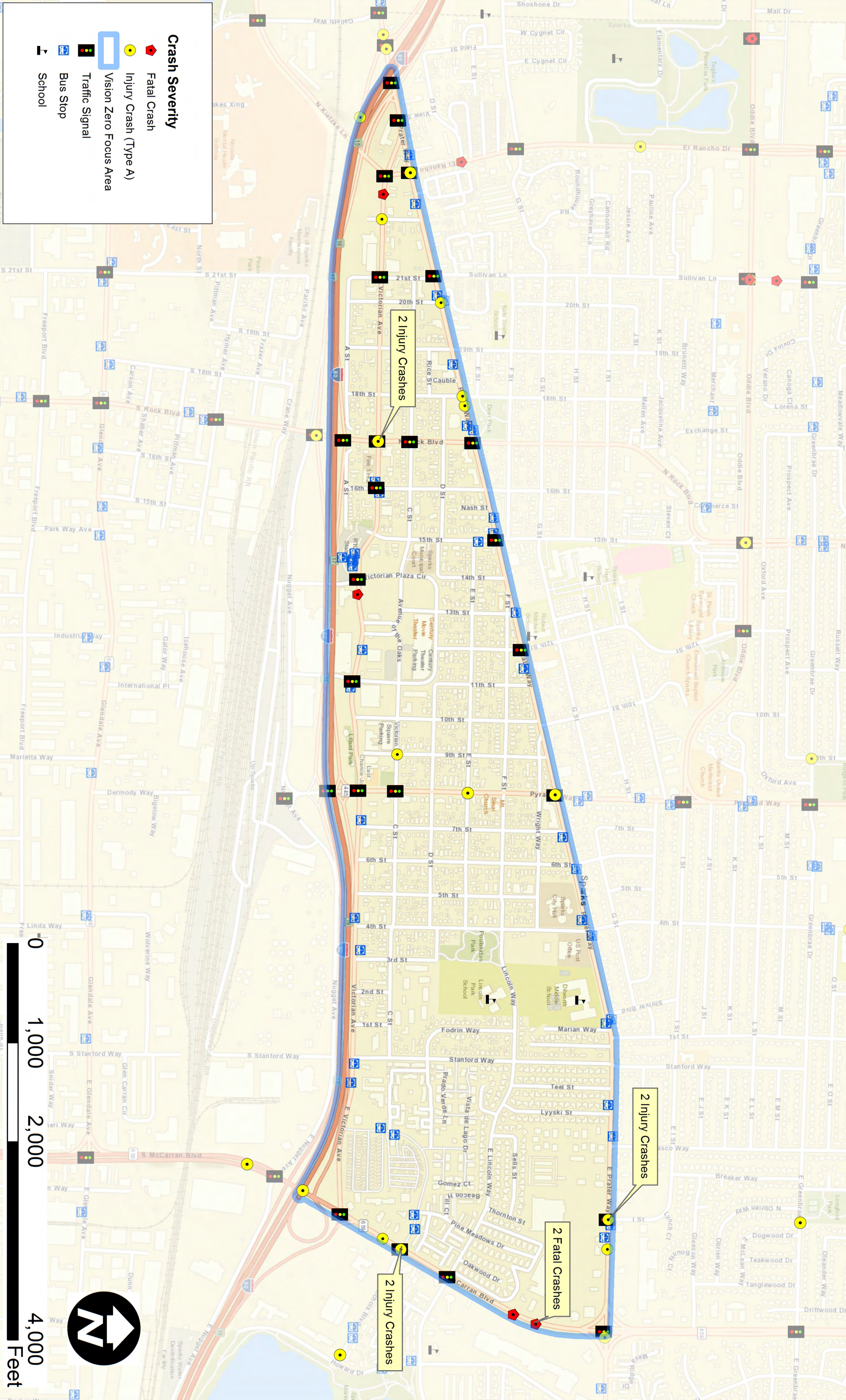


Total Crashes: 56\*

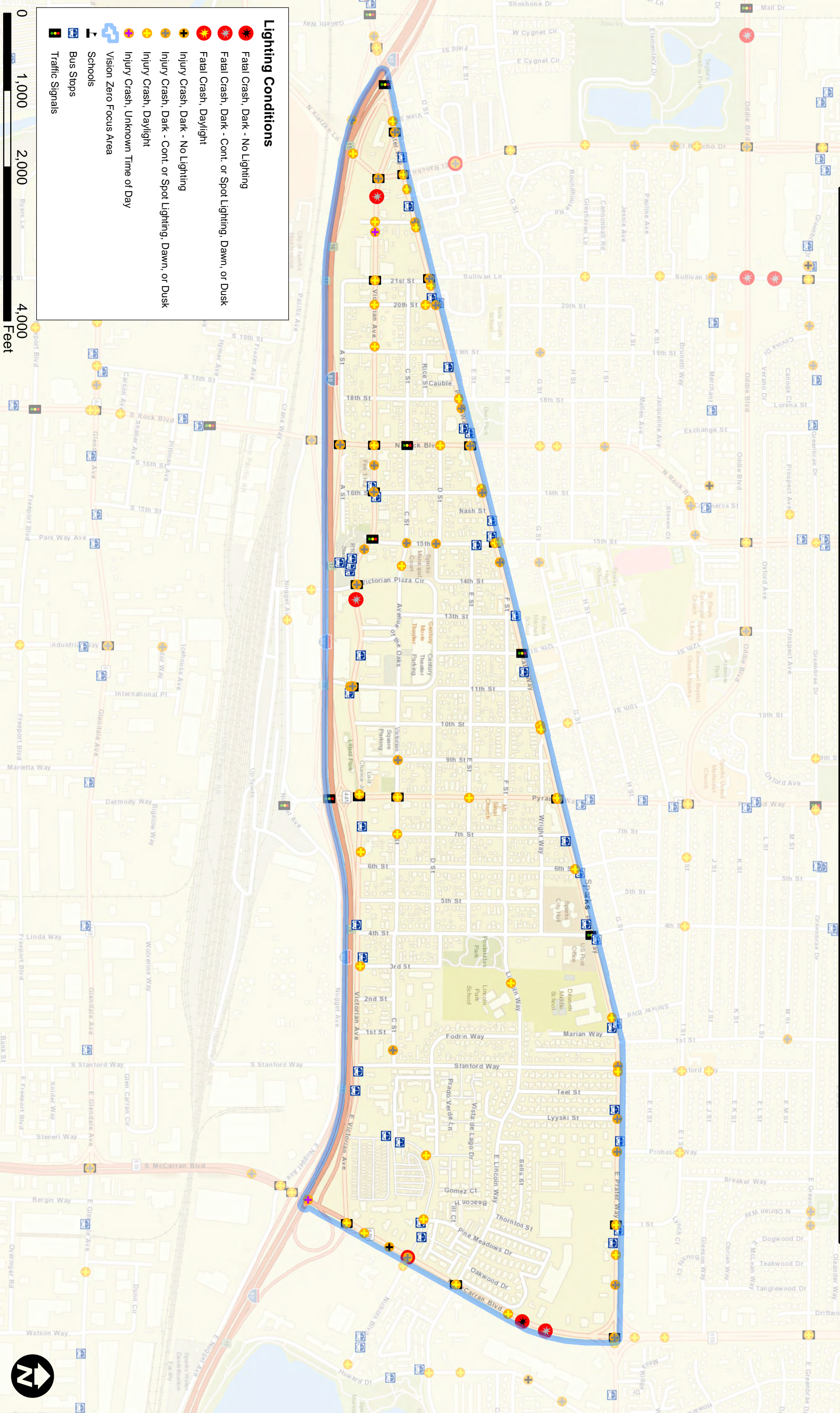
- Apparently Normal
- Had Been Drinking
- Obstructed View
- Other Improper Driving

*\*Does not include 19 crashes with no known Driver action*

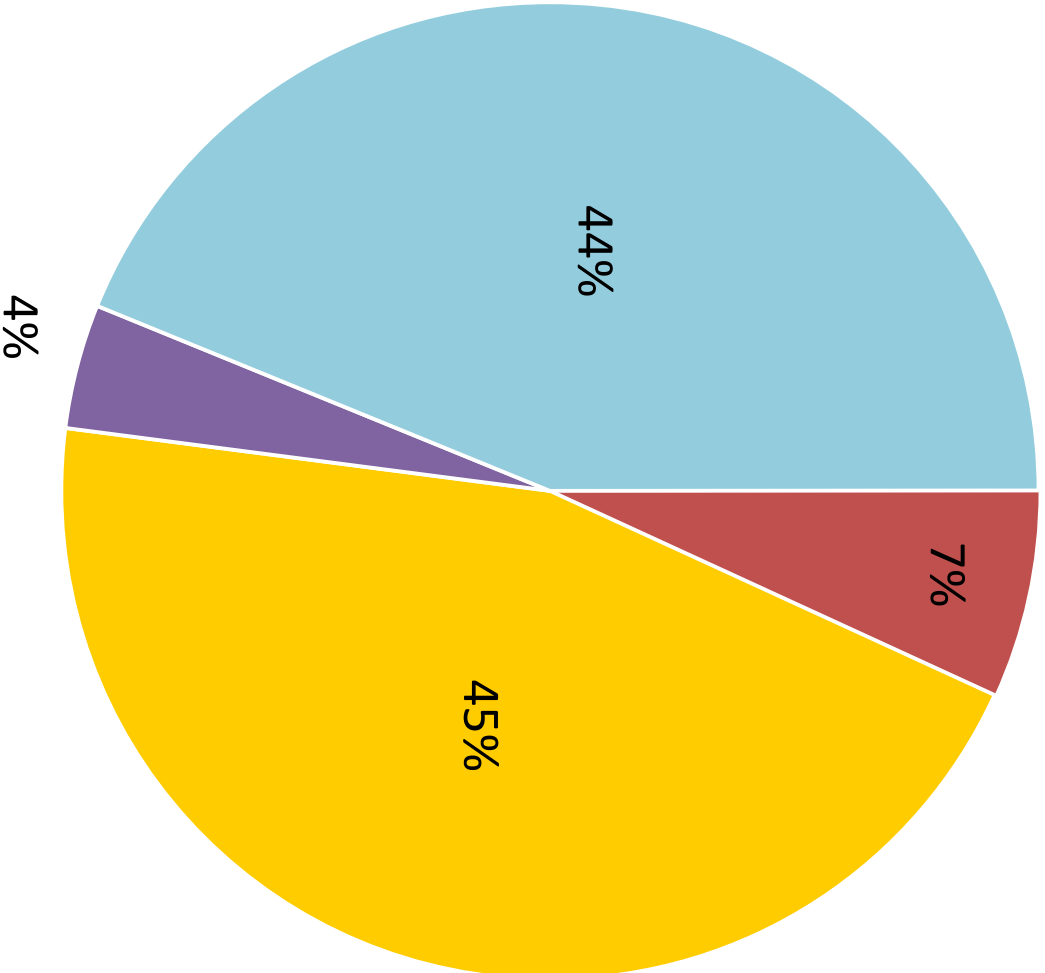
# 2011 - 2017 Sparks Fatal & Serious Injury Pedestrian Crashes



# 2011-2017 Sparks Lighting Conditions during Pedestrian Crashes



# 2011-2017 Sparks Lighting Conditions during Pedestrian Crashes



Total Crashes: 73\*

- Night Time Fatal Crash
- Night Time Injury Crash - Cont/Spot/Dawn/Dusk
- Night Time Injury Crash - Dark/Unknown
- Day Time Injury Crash

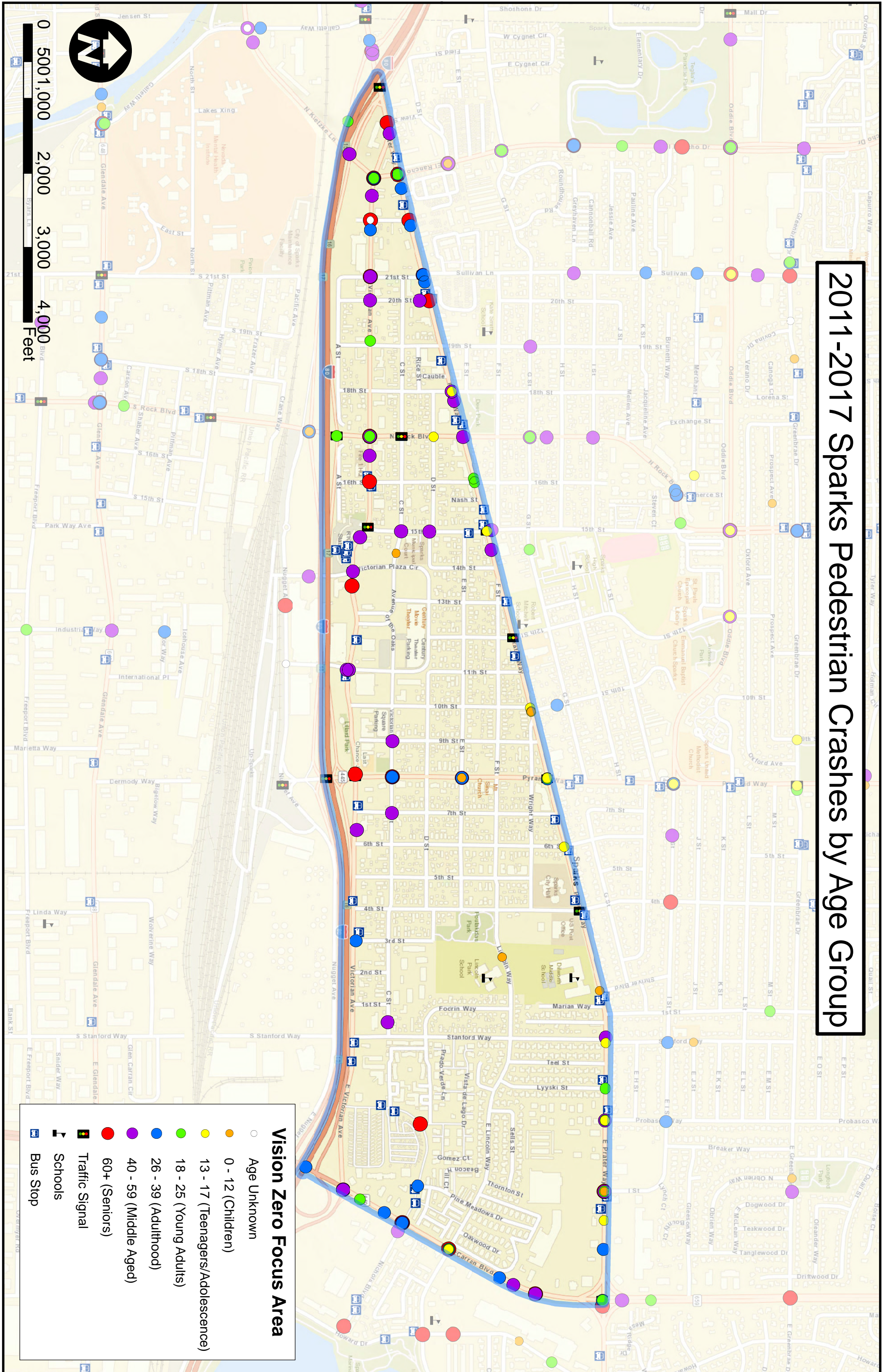
\*Note: Does not include 1 unknown time of day injury crash

# 2011-2017 Sparks Pedestrian Crashes by Age Group



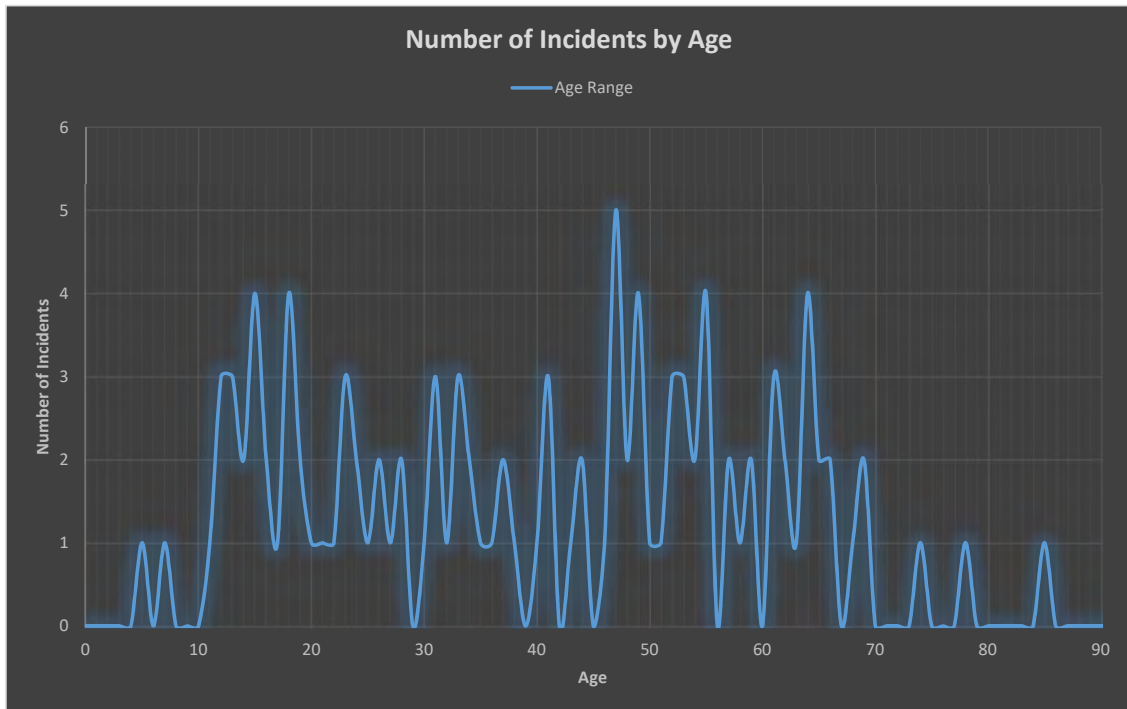
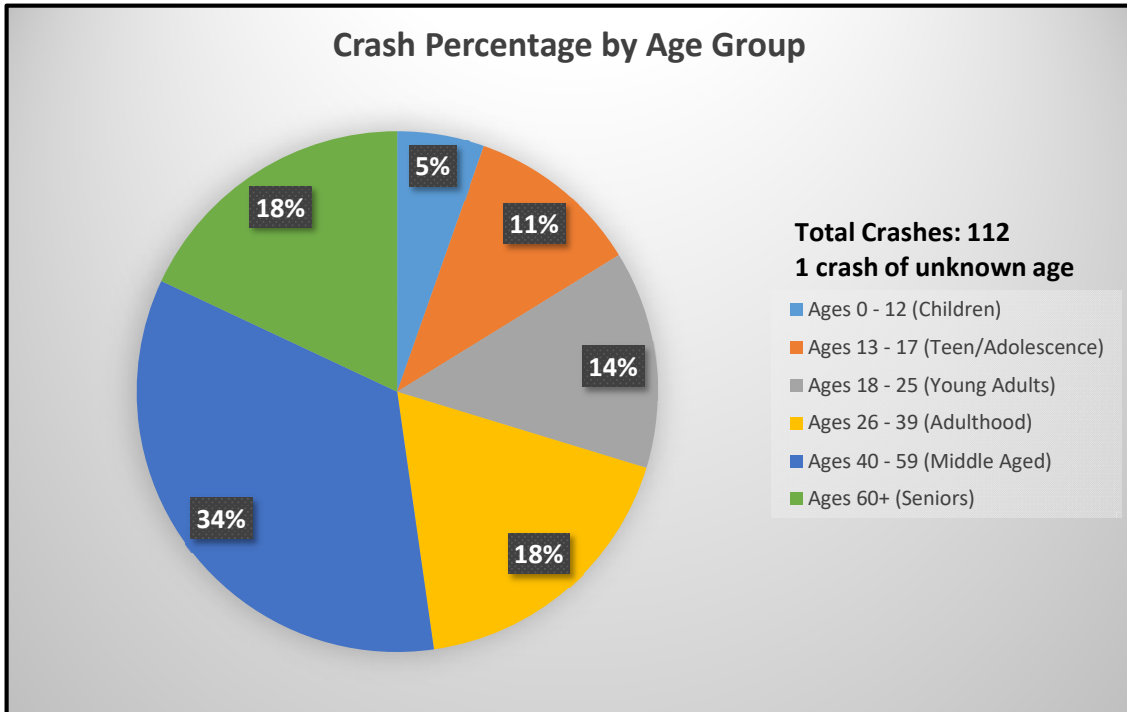
**Vision Zero Focus Area**

- Age Unknown
- 0 - 12 (Children)
- 13 - 17 (Teenagers/Adolescence)
- 18 - 25 (Young Adults)
- 26 - 39 (Adulthood)
- 40 - 59 (Middle Aged)
- 60+ (Seniors)
- 🚦 Traffic Signal
- 🎓 Schools
- 🚌 Bus Stop



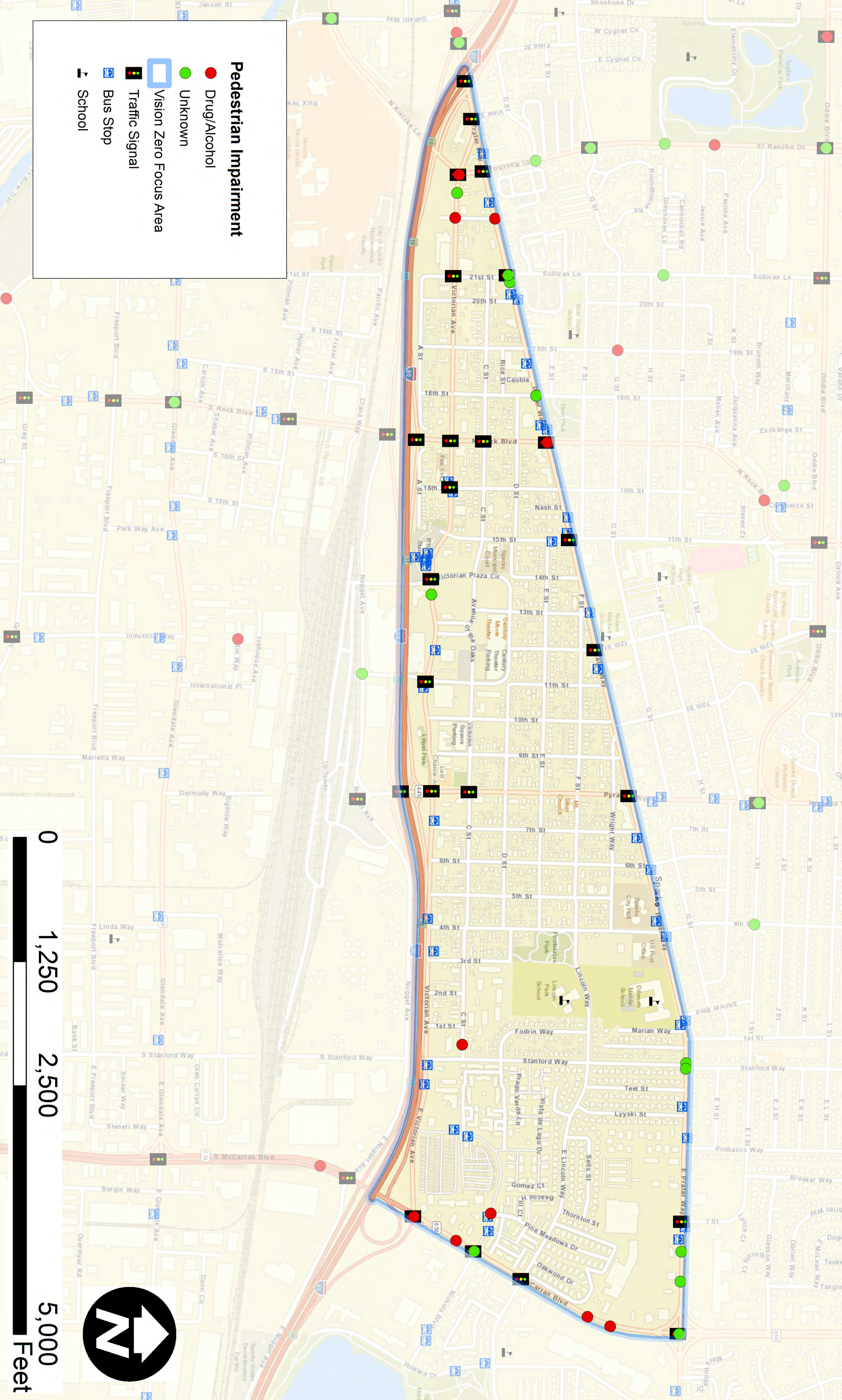


## 2011-2017 Sparks Pedestrian Crashes by Age Group





# 2011 - 2017 Sparks Pedestrian Impairment in Pedestrian Crashes



- Drug/Alcohol
- Unknown
- Vision Zero Focus Area
- ⬛ Traffic Signal
- 🚌 Bus Stop
- 🎓 School

0 1,250 2,500 5,000 Feet

